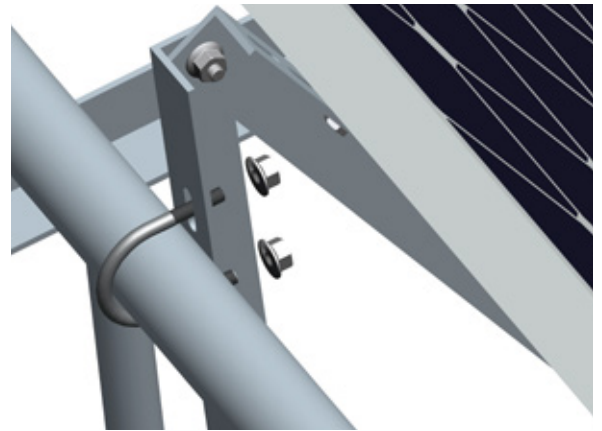
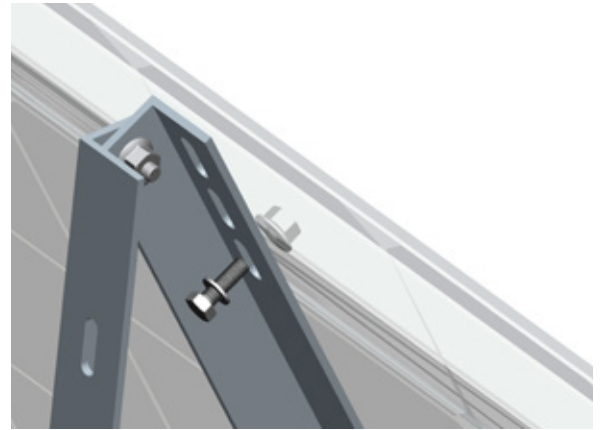
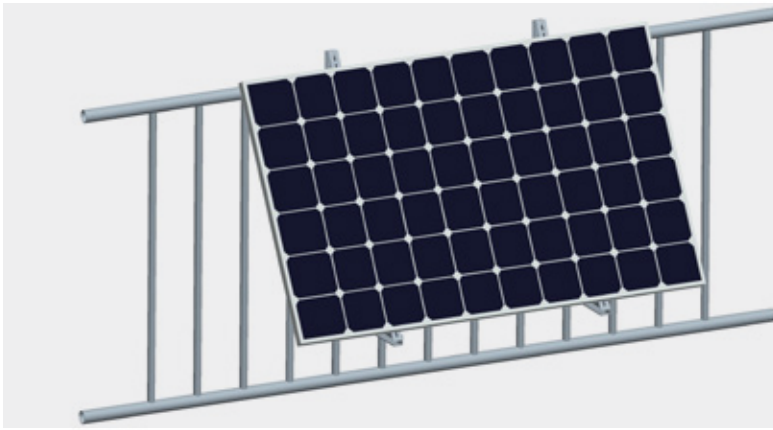


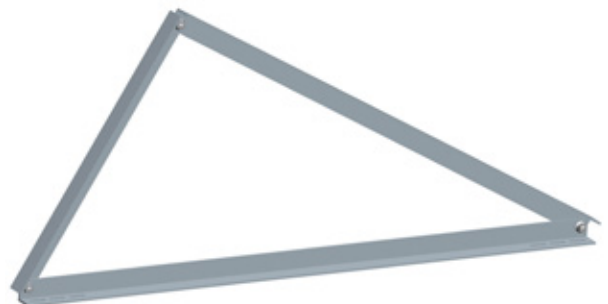
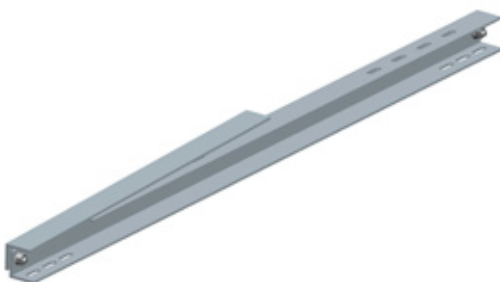
Solar Balcony Tripod



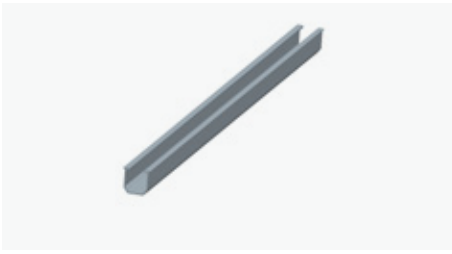
- ▶ Lightweight system, ideal for easy installation and transportation
- ▶ Completely pre-assembled, simply unfolded and secured to the balcony for Installation.

Components

1. Pre-assembly



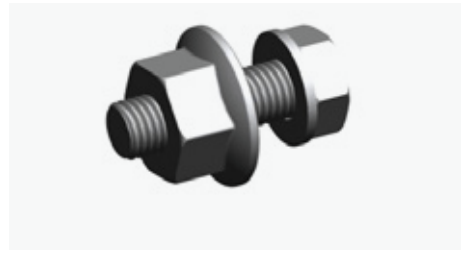
2. Other components



Rail



Rail Splice



M8*20 Hex Bolt



M8*25 Hex Bolt



M8 U Bolt
(Round or Square)



Steel Tie

Specification



Model	SBT1
Type	Solar Balcony Tripod
Application	Balcony
Tilt Angle	Fixed 30°
Material	Al6005-T5 & SUS304
Panel Orientation	Landscape
Max Panel Width	1150mm
Design Standard	DIN 1055
Warranty	10 years
Max Wind Speed	30 m/s
Max Snow Load	1 kN/m ²

Package



Quantity / Carton	1 set (2 pieces)
Carton Size	1180x1050x1100mm
N. W. / CTN	5.4kg
G.W. / CTN	5.6kg